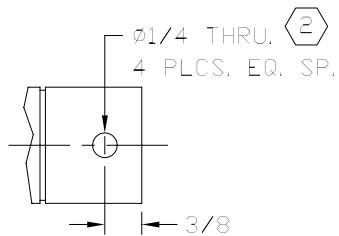
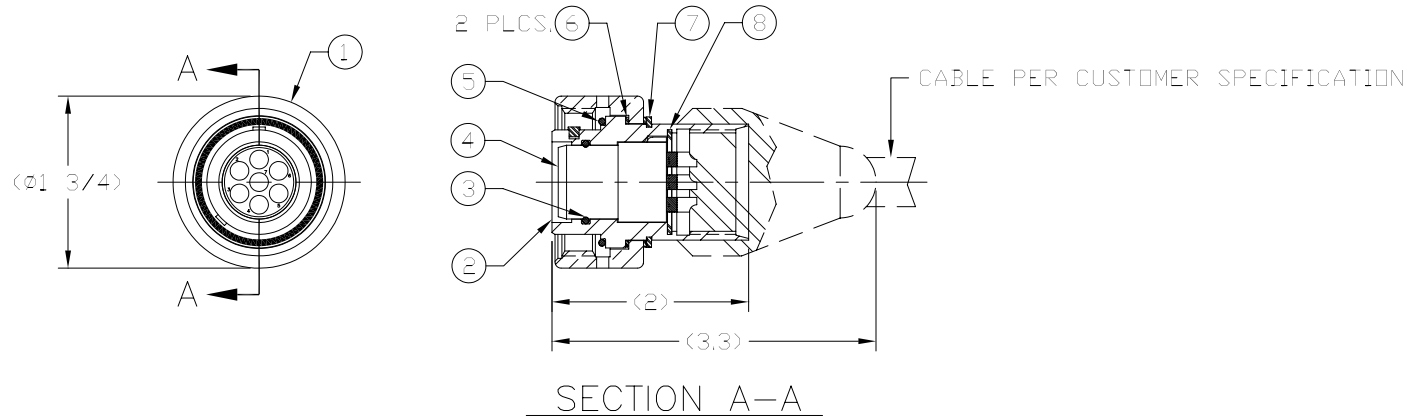


NOTICE
 The information disclosed herein was originated by and is the property of BIRNS, Inc. Except for uses which may be expressly granted, BIRNS, Inc. reserves all patent, proprietary, design, use, sale, manufacturing and reproduction rights in and to said information and this document.

REVISIONS				
ZONE	LTR	DESCRIPTION	DATE	APPROVED
	/	INITIAL DRAWING RELEASE	960424	E.BIRNS

- NOTES:**
1. APPLY A LIGHT COAT OF ITEM 9 TO O-RINGS PRIOR TO ASSY.
 2. DRILL HOLES AS SHOWN ON CCP SHELL PRIOR TO OVERMOLDING.
 3. IR TEST PER BIRNS QCP-6530-001 AFTER OVERMOLDING.



9	AR	52K-005	GREASE	SILICONE	FOOD GRADE
8	1	56B-076	SNAP RING, N5000-100-H	S.S.	PH15-7 MD.
7	1	56B-052	SNAP RING, 5100-118-H	S.S.	PH15-7 MD.
6	2	23D-075	WASHER, Ø1.190 x Ø1.329 x .025	S.S.	302
5	1	59A-101	O-RING, 2-024	BUNA	N674-70
4	1	MO-PIS	INSERT ASSY, SKT, MINI-D	GRE	COSMIC E-484
3	1	59A-093	O-RING, 2-018	BUNA	N674-70
2	1	24E-174	SHELL, MINI-D CABLE PLUG	S.S.	316
1	1	24F-024	ENGAGING NUT, MINI-D-CCP	BRASS	464 PER ASTM B2
ITEM QTY	PART NO.	DESCRIPTION		MATERIAL	SPEC

PARTS LIST

MATERIAL	
TREATMENT	
FINISH	
NEXT ASSY	USED ON
APPLICATION	


UNLESS OTHERWISE SPECIFIED:
 DIMENSIONS ARE IN INCHES
 ALL DIMENSIONS TO APPLY AFTER PLATING

.0000	±.0005
.000	±.005
.00	±.010
.0	±.015

FRACTIONS = 1/32
 ANGULAR = 1/2°
 ROUGHNESS R3
 METRIC = .5
 DRILLED HOLES UP TO 1/2" ±.005 - .001

THREADS MUST BE FREE FROM SHARP EDGES AND BURRS
 RADIUS ALL SHARP EDGES .005-.015
 RADIUS BLEND ALL CHAMFERS
 FILLET RADII TO BE .015

CONTRACT NUMBER	
DRAWN	DATE
J.KO	960402
CHECK	DATE
J.KO	
ENGR	DATE
J.KO	960403
QA	DATE
J.MAGLAQUE	960403
APPROVED	DATE
E.BIRNS	960423


BIRNS, Inc. Tel: 805-487-5393
 Main Plant: 1720 FISKE PLACE, OXNARD CA, 93033

TITLE

MINI-D CABLE PLUG

SIZE	CAGE CODE	DWG NO.
C	58608	MO-CP
SCALE	UNIT WT.	SHEET
1/1	1 LB.	