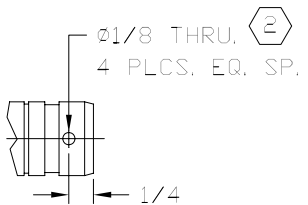
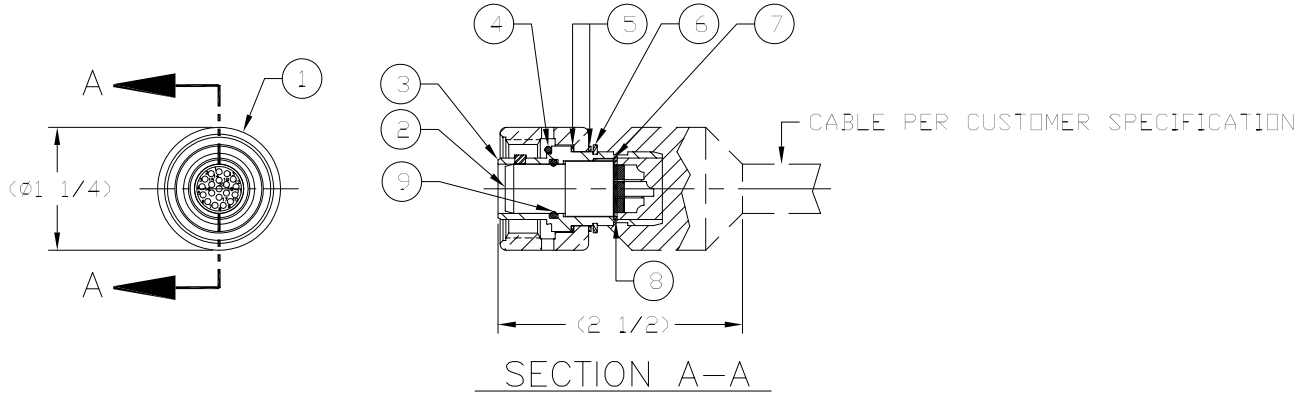


NOTICE
 The information disclosed herein was originated by and is the property of BIRNS Inc. Except for uses which may be expressly granted, BIRNS Inc. reserves all patent, proprietary, design, use, sale, manufacturing and reproduction rights in and to said information and this document.

REVISIONS				
ZONE	LTR	DESCRIPTION	DATE	APPROVED
	✓	INITIAL DRAWING RELEASE		E.BIRNS

- NOTES:**
1. APPLY A LIGHT COAT OF ITEM 10 TO O-RINGS PRIOR TO ASSY.
 2. DRILL HOLES AS SHOWN ON CCP SHELL PRIOR TO OVERMOLDING.
 3. IR TEST PER BIRNS QCP-6530-001 AFTER OVERMOLDING.



ITEM	QTY	PART NO.	DESCRIPTION	MATERIAL	SPEC
10	AR	52K-005	GREASE	SILICONE	FOOD GRADE
9	1	59A-053	O-RING, 2-014	BUNA	N674-70
8	1	56B-007	SNAP RING, UR-62-S	S.S.	302
7	1	23D-069	WASHER, Ø.533 x Ø.622 x .01	S.S.	302
6	1	56B-022	SNAP RING, 5100-75-H	S.S.	PH15-7 MD.
5	2	23D-065	WASHER, Ø.758 x Ø.866 x .025	S.S.	302
4	1	59A-060	O-RING, 2-017	BUNA	N674-70
3	1	24E-171	SHELL, MINI-K CABLE PLUG	S.S.	316
2	1	MK-PIS	INSERT ASSY, SKT, MINI-K	GRE	COSMIC E-484
1	1	24F-027	ENGAGING NUT, MINI-K-CCP	BRASS	464 PER ASTM B2

PARTS LIST

MATERIAL	
TREATMENT	
FINISH	
NEXT ASSY	USED ON
APPLICATION	

UNLESS OTHERWISE SPECIFIED
 DIMENSIONS ARE IN INCHES
 ALL DIMENSIONS TO
 APPLY AFTER PLATING

.0000	-----	±.0005
.000	-----	±.005
.00	-----	±.010
.0	-----	±.015

FRACTIONS + 1/32
 ANGULAR = 1/2°
 ROUGHNESS 63
 METRIC + .5
 DRILLED HOLES UP
 TO 1/2" + .005 - .001

THREADS MUST BE FREE FROM SHARP EDGES AND BURRS
 RADIUS ALL SHARP EDGES .007-.015
 RADIUS BLEND ALL CHAMFERS
 FILLET RADIUS TO BE .015

CONTRACT NUMBER	
DRAWN	DATE
J.KO	960417
CHECK	DATE
J.KO	
ENGR	DATE
J.KO	960423
QA	DATE
J.MAGLAQUE	960423
APPROVED	DATE
E.BIRNS	

BIRNS, Inc. Tel: 805-487-5393
 Main Plant: 1720 FISKE PLACE, OXNARD CA, 93033

TITLE

MINI-K CABLE PLUG

SIZE	CAGE CODE	DWG NO.
C	58608	MK-CP

SCALE 1/1 UNIT WT. 1.1 LBS. SHEET