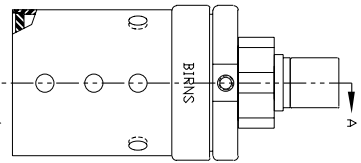
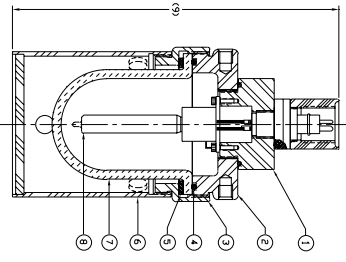
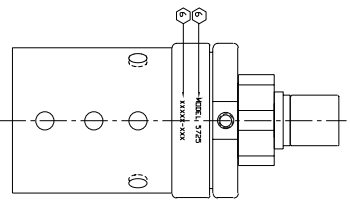
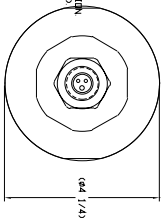


For information regarding terms and conditions of sale, please refer to the contract or purchase order. This document is not a contract. It is subject to the terms and conditions of the contract or purchase order.

NOTES:
 1. APPLY A LIGHT COAT OF ITEM 9 ON O-RINGS PRIOR TO ASSY.
 2. APPLY ITEMS TO TO MATING S.S. THD. PRIOR TO ASSY.
 3. CABLE ASSY. REF 35316
 4. OPTIONAL, NON-BROWNING SILICA DOME: 35B-011
 5. SEE TABLE 1 FOR LAMP OPTIONS.
 6. MARK MODEL AND SERIAL NUMBER PER MIL-STD-130, ELECTROCHEMICAL ETCHING, IN 1/8" HIGH LETTERS, APPROXIMATE LOCATION
 7. PNEUMATIC RATING PER CUSTOMER SPECIFICATION OR 45 PSIG MAX. (100%)



NO	QTY	DESCRIPTION	UNIT	REF. NO.
10	AR	58K-006	NUCLEAR LUBE	NICKEL CONDUIT
9	AR	58K-005	GREASE	SILICONE FOOD GRADE
8	1	32B-005	LAMP, 120V/500W, MINI-CAN	QUARTZ CONDUIT
7	1	35B-006	DOME, REFUELLING LIGHT	BROUILLAT PIREX
6	1	62A-003	LEYAN ASSY, REFUELLING LIGHT	LEYAN CONDUIT
5	1	59B-006	GASCKET, REFUELLING LIGHT	SILICONE 5604-70
4	1	59A-016	O-RING, 2-236	SILICONE 5604-70
3	1	56A-037	DOME RETAINING RING, REFUELLING LIGHT	S.S.
2	1	29E-004	BASE, REFUELLING LIGHT	S.S.
1	1	56F-013	REAR MOUNTING ARM, REFUELLING LIGHT	S.S.

ITEM NO.	DESCRIPTION	UNIT	REF. NO.
1	REFUELLING LIGHT ASSY, S.S., MINI-CAN, ARMOUNTED	ASSEMBLY	57250110

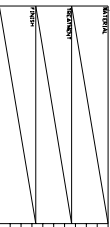


REFUELLING LIGHT ASSY, S.S., MINI-CAN, ARMOUNTED

57250110

P/N	VOL. T/V/ATT
32B-002	120V/100W
32B-003	120V/150W
32B-004	120V/250W
32B-005	120V/500W
32B-007	120V/1000W
32B-016	240V/100W
32B-015	240V/150W
32B-017	240V/250W

TABLE 1



MATERIAL	FINISH	APPLICATION

ITEM NO.	DESCRIPTION	UNIT	REF. NO.
1	REFUELLING LIGHT ASSY, S.S., MINI-CAN, ARMOUNTED	ASSEMBLY	57250110

REV. NO.	REVISION	DATE	APPROVED
1	INITIAL SHIPMENT RELEASE	08/29/78	LIBRIS