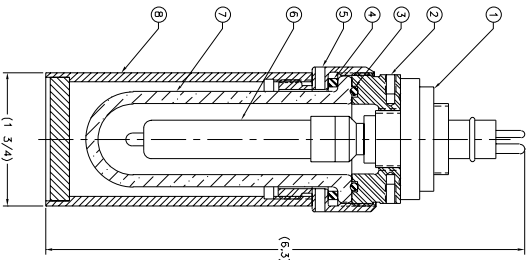


NOTES:

1. APPLY A LIGHT COAT OF ITEM 9 TO O-RING PRIOR TO ASSEMBLY.
 2. 35B-005, NON-BROWNING TUBE LIGHT LENS IS AVAILABLE.



REV	DESCRIPTION	APPROVED	DATE
L	REDRAWN	E. BIRNS	990223

OPTIONAL MOUNT

AVAILABLE LAMP

44E-002	CAMERA CLAMP	35B-018	240V / 500W
44F-002	SUSPENSION ASSY	35B-017	240V / 250W
		35B-016	240V / 100W
	DESCRIPTION	35B-015	240V / 150W
		35B-005	120V / 500W
		35B-004	120V / 250W
54B-001	AXIAL REFLECTOR	35B-003	120V / 150W
54C-001	FLAT REFLECTOR	35B-002	120V / 100W
			RATING

OPTIONAL REFLECTOR

2

9	AR	52K-005	GREASE	SILICONE	COMM L
8	1	62A-015	PROJECTOR ASSY	LEXYAN	COMM L
7	1	35B-002	LENS	BOROSILICATE	—
6	1	32B-003	LAMP, 120V/500W	QUARTZ	COMM L
5	1	56A-035	RETAINING RING	SS	304
4	1	59B-008	CASKET, LENS	SILICONE	COMM L
3	1	59A-007	O-RING, 2-122	Viton	V884-75
2	1	29E-002	BASE	SS	304
1	1	BE43P-54	CONNECTOR	GRE	E-484



BIRNS, INCORPORATED
 OAKLAND, CA, 94612-0909
 http://www.birns.com

NOTICE

This information disclosed herein was originated by and is the property of BIRNS, Inc. Except for uses which may be expressly granted, BIRNS, Inc. does not warrant, represent, or make any representation, express or implied, in connection with the reproduction rights in and to said information and this document.

MATERIAL

NONE
 FINISH
 NONE
 TREATMENT
 NONE

DIMENSIONS IN INCHES (mm) AFTER PLATING

PARTS MUST FIT MATING PARTS AND FUNCTION AS INTENDED.

0.0000 = ±0.005 FRACTIONS = ±1/16
 0.00 = ±0.010 DECIMALS = ±.005-.001
 0.0 = ±0.015 METRIC = ±.005-.001
 0 = ±.003 SURFACE ROUGHNESS = 63
 REFINISH SURFACE ROUGHNESS = 63
 TYP. DIM. & TOLER. = R.01

CONTRACT NUMBER

TUBELIGHT ASSY

DRAWING NO. 57100110

DRAWING NO. 57100110

SCALE: 2/1

SHEET 1 OF 1

DATE: 990223

APPROVED: E. BIRNS

DWG. NO. 57100110

UNIT WT.: 1

SHEET 1 OF 1

57100110.DWG