

05-010-001-00



ELASTOMERIC SERIES

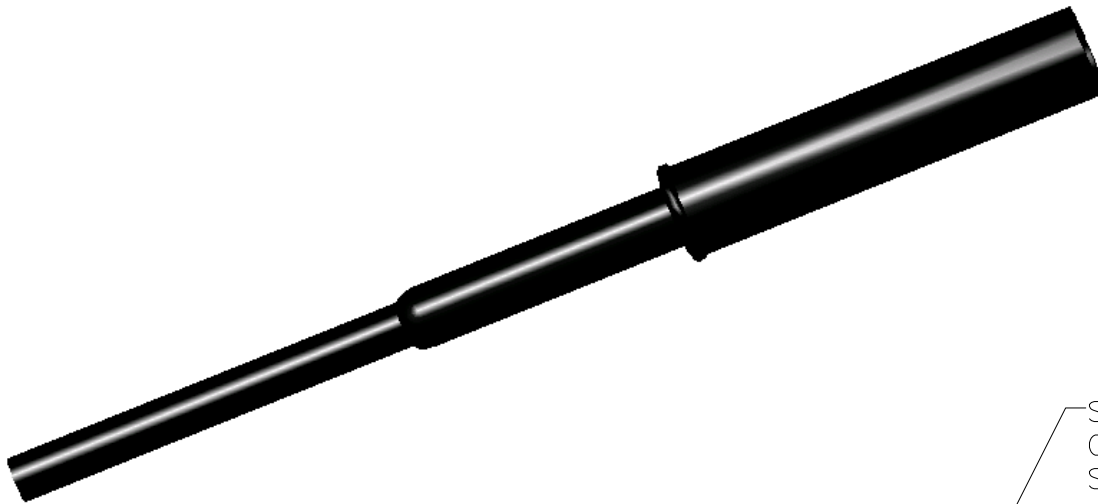
RMA-FS

SPECIFICATIONS:

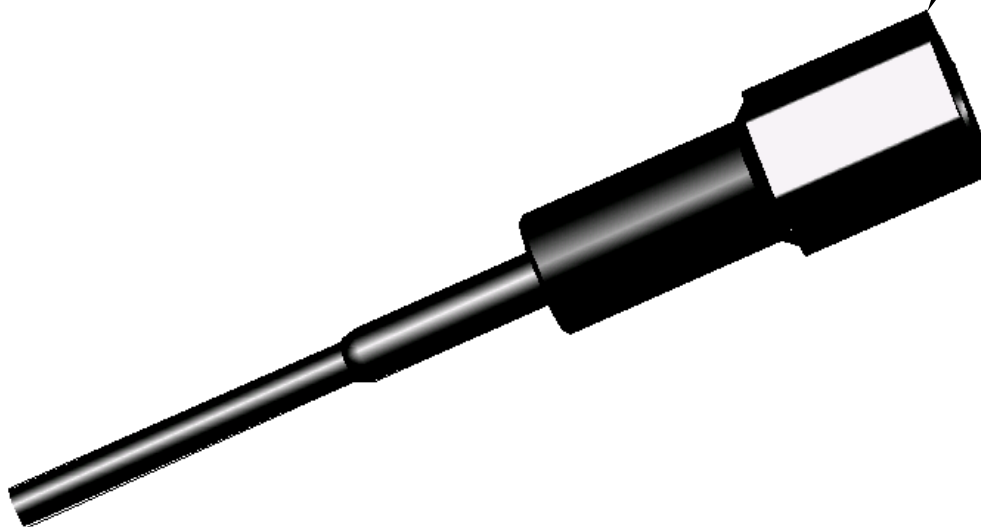
BODY MATERIAL: Polychlorprene (Neoprene) rubber 52G-001

ELECTRICAL CONTACTS: Beryllium Copper Alloy

OPTIONAL LOCKING SLEEVES: Available in Delrin or
AISI 316 Stainless Steel



SHOWN WITH
OPTIONAL LOCKING
SLEEVE



RMA-FS

1720 Fiske Place Oxnard, California 93033-1863
Phone: (805) 487-5393 FAX: (805) 487-0427 Email: service@birns.com
www.birns.com

USA Toll-Free:
888-BIRNS-88

05-010-002-00

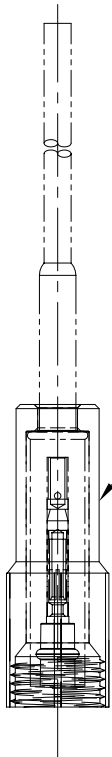


ELASTOMERIC SERIES

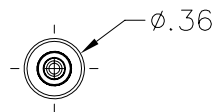
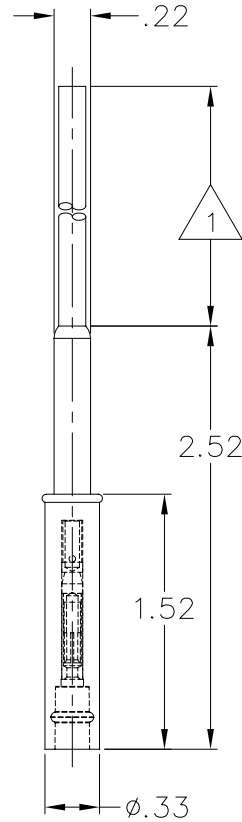
RMA-FS

NOTES: UNLESS OTHERWISE SPECIFIED.

- 1 CAN BE ANY LENGTH (PER CUSTOMER REQUEST.).
- 2. MATES W/ XSA-BCL, RMA-MP, XSA-BC, RMA-BCL.



(OPTIONAL)
LOCKING SLEEVE
63A-014: FEMALE, DELRIN
63A-037: FEMALE, AISI 316 S.S.



RMA-FS

1720 Fiske Place Oxnard, California 93033-1863
Phone: (805) 487-5393 FAX: (805) 487-0427 Email: service@birns.com
www.birns.com

USA Toll-Free:
888-BIRNS-88